

## For Commercial Applications

Job Name \_\_\_\_\_ Item Designation \_\_\_\_\_  
Job Location \_\_\_\_\_ Contractor \_\_\_\_\_  
Engineer \_\_\_\_\_ Representative \_\_\_\_\_  
Wall Thickness: \_\_\_\_\_ Inlet: P\_\_ C\_\_ (P1\_\_ EP\_\_ **MADE TO ORDER, NO RETURN**) Finish: CH\_\_ BR\_\_ PB\_\_

# Woodford Model 65

## Anti-Siphon Protected Automatic Draining Freezeless Wall Hydrant

The Model 65 is an automatic draining, freezeless wall hydrant with hose connection Anti-Siphon Vacuum Breaker. The hydrant drains as handle is shut off, *even if hose is attached*. The Model 65 is designed to blend in with modern architecture for installation on restaurants, schools, office buildings, churches, apartments, motels, stores, shopping centers and industrial buildings.

**Sizes:** 4" - 24" (in 2" increments)  
CC (Close Coupled) for non-freezing climates

### Features:

- Drain port under nozzle diverts water away from building
- Red Brass head & valve body
- 3/8" solid brass operating rod
- Copper casing tubes
- Hardened stainless steel operating stem
- One piece valve plunger
- 4 inlet options
- Loose tee key operation
- No Lead Solder - All joints
- Supplied with adjustable wall clamp

### Specifications:

- Hydrant plus vacuum breaker is ASSE Standard 1019-B approved.

#### • HOSE CONNECTION VACUUM BREAKER:

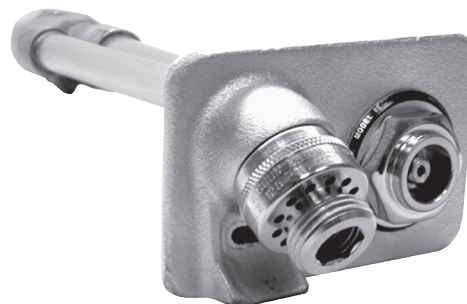
- NIDEL® Model 34HA with 3/4 inch male hose thread
- ASSE Standard 1011 approved
- IAPMO® listed
- Meets Government Specification WW-P-54 1b
- Single check valve

• **Maximum Working Pressure:** 125 p.s.i.

• **Maximum Temperature:** 120° F

### Specify as follows:

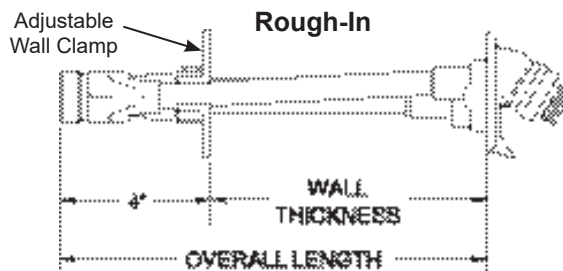
Wall hydrant shall be Woodford Model 65, automatic draining with anti-siphon vacuum breaker. ASSE Standard 1019-B approved. 3/4" inlet and outlet (specify type of inlet). Hardened stainless steel operating stem and one-piece valve plunger to control both flow and drain functions. Exterior finish to be Chrome Plated (options: Polished Brass or Rough Brass). Loose tee key to be furnished with each hydrant. Wall thickness to be \_\_\_\_\_ inches.



### Exterior Finish:

Standard - Chrome (CH)

Optional - Brass (BR) Polished Brass (PB)  
Fits one standard modular brick course.



Overall Length = Wall Thickness + Inlet  
Close Coupled Overall Length = 5"

### Inlet Options

- P - 3/4" Female Pipe Thread
- P1 - 1" Male Pipe Thread
- C - 3/4" Copper Water Tube
- EP - Union Elbow with 3/4" Male Pipe Thread



**WOODFORD MANUFACTURING COMPANY, LLC**

2121 WAYNOKA ROAD  
COLORADO SPRINGS, CO 80915  
Phone (800) 621-6032

Website: [www.woodfordmfg.com](http://www.woodfordmfg.com)

Email: [sales@woodfordmfg.com](mailto:sales@woodfordmfg.com)